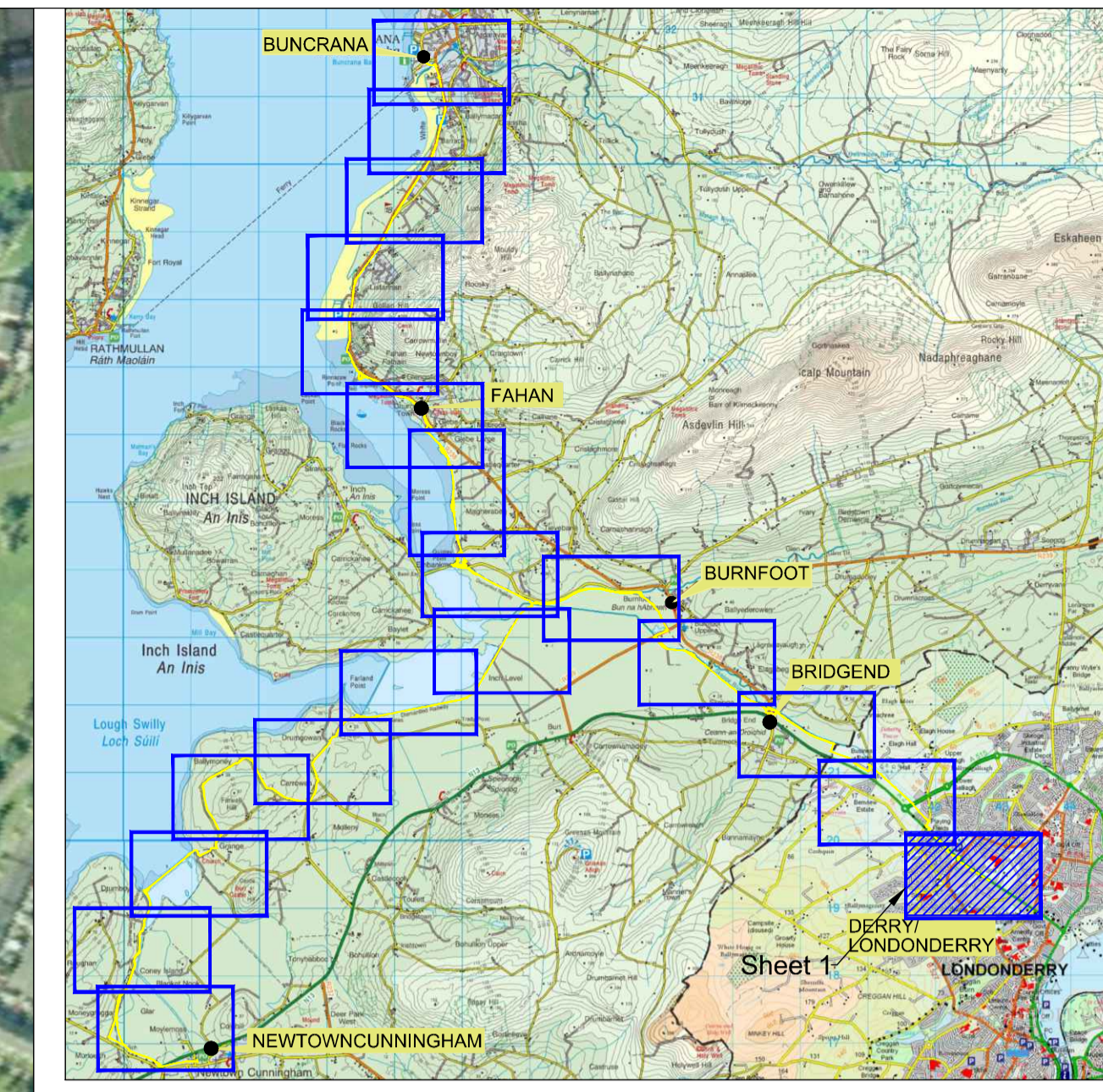



Match Line

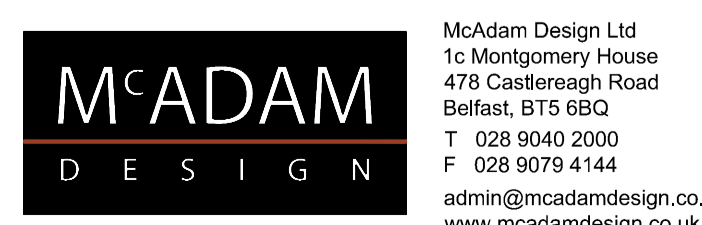


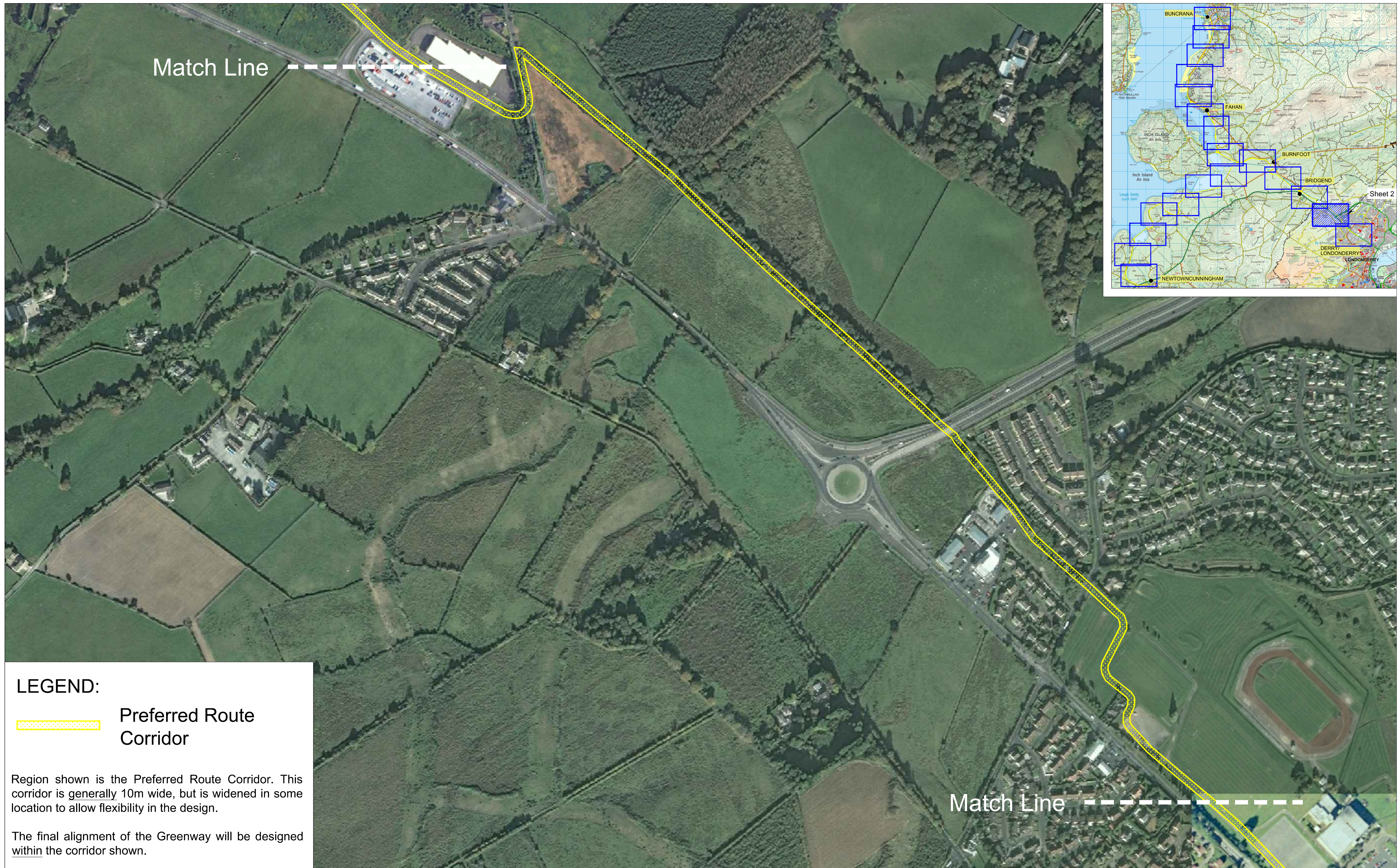
LEGEND:
 Preferred Route Corridor

Region shown is the Preferred Route Corridor. This corridor is generally 10m wide, but is widened in some location to allow flexibility in the design.

The final alignment of the Greenway will be designed within the corridor shown.

NORTH WEST GREENWAY NETWORK
Route 1 - Preferred Route Corridor
Sheet 1 of 20, 1:250 @ A1, 1:500 @ A3
Published 29th July 2019





Match Line

Sheet 2

LEGEND:

 Preferred Route Corridor

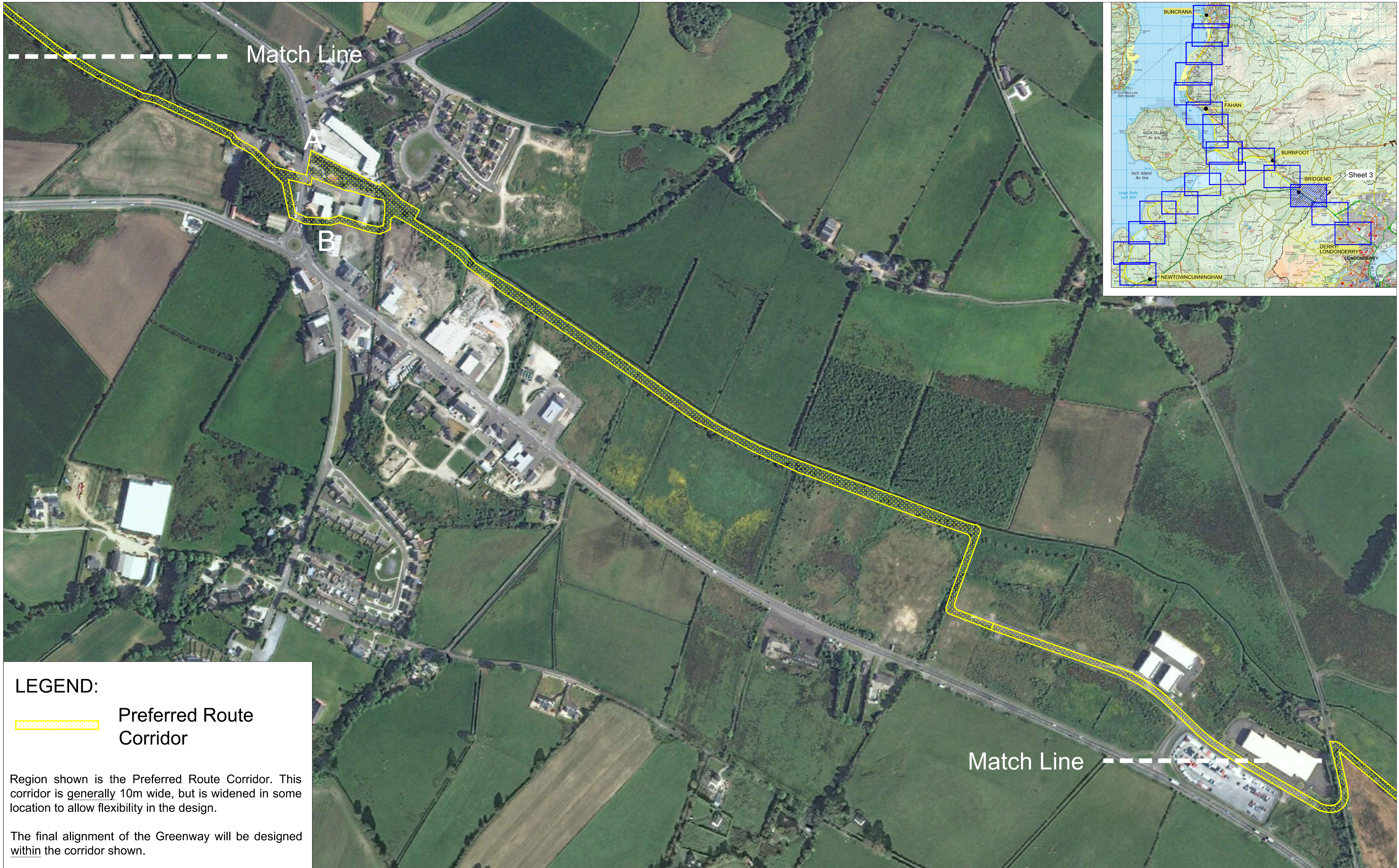
Region shown is the Preferred Route Corridor. This corridor is generally 10m wide, but is widened in some location to allow flexibility in the design.

The final alignment of the Greenway will be designed within the corridor shown.

Match Line

NORTH WEST GREENWAY NETWORK
 Route 1 - Preferred Route Corridor
 Sheet 2 of 20, 1:250 @ A1, 1:500 @ A3
 Published 29th July 2019





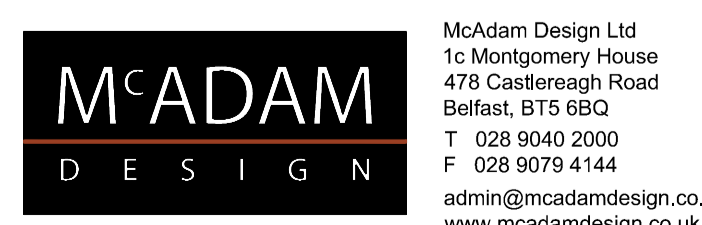
LEGEND:

 Preferred Route Corridor

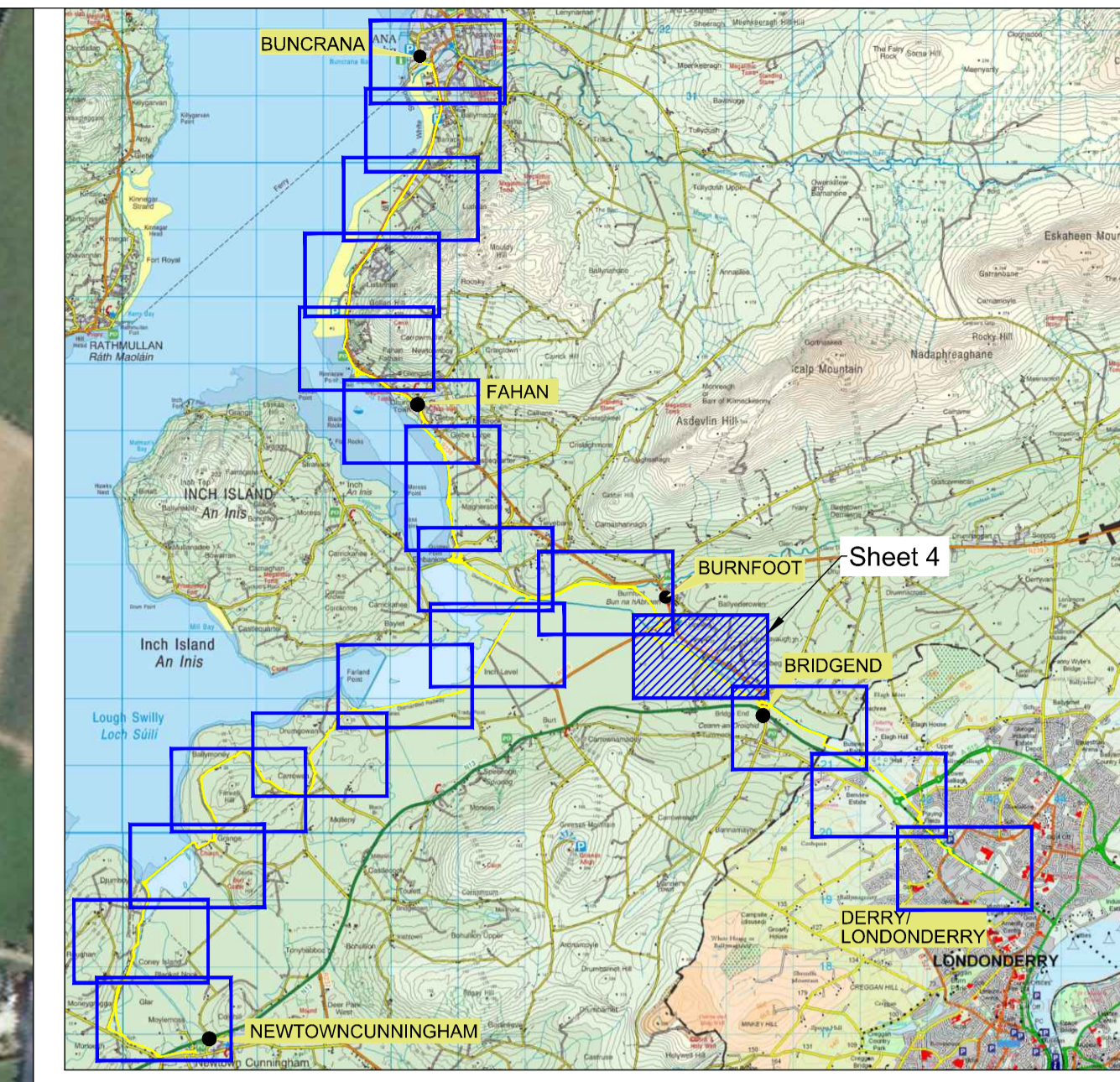
Region shown is the Preferred Route Corridor. This corridor is generally 10m wide, but is widened in some location to allow flexibility in the design.

The final alignment of the Greenway will be designed within the corridor shown.

NORTH WEST GREENWAY NETWORK
 Route 1 - Preferred Route Corridor
 Sheet 3 of 20, 1:250 @ A1, 1:500 @ A3
 Published 29th July 2019



Match Line - - - - -



LEGEND:

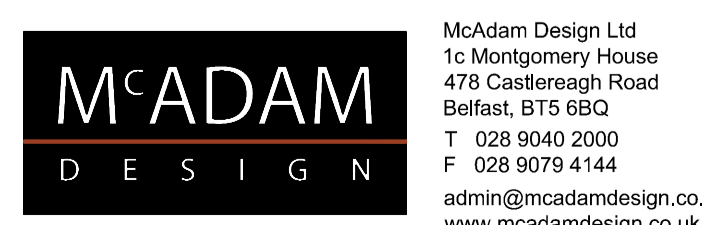
 Preferred Route Corridor

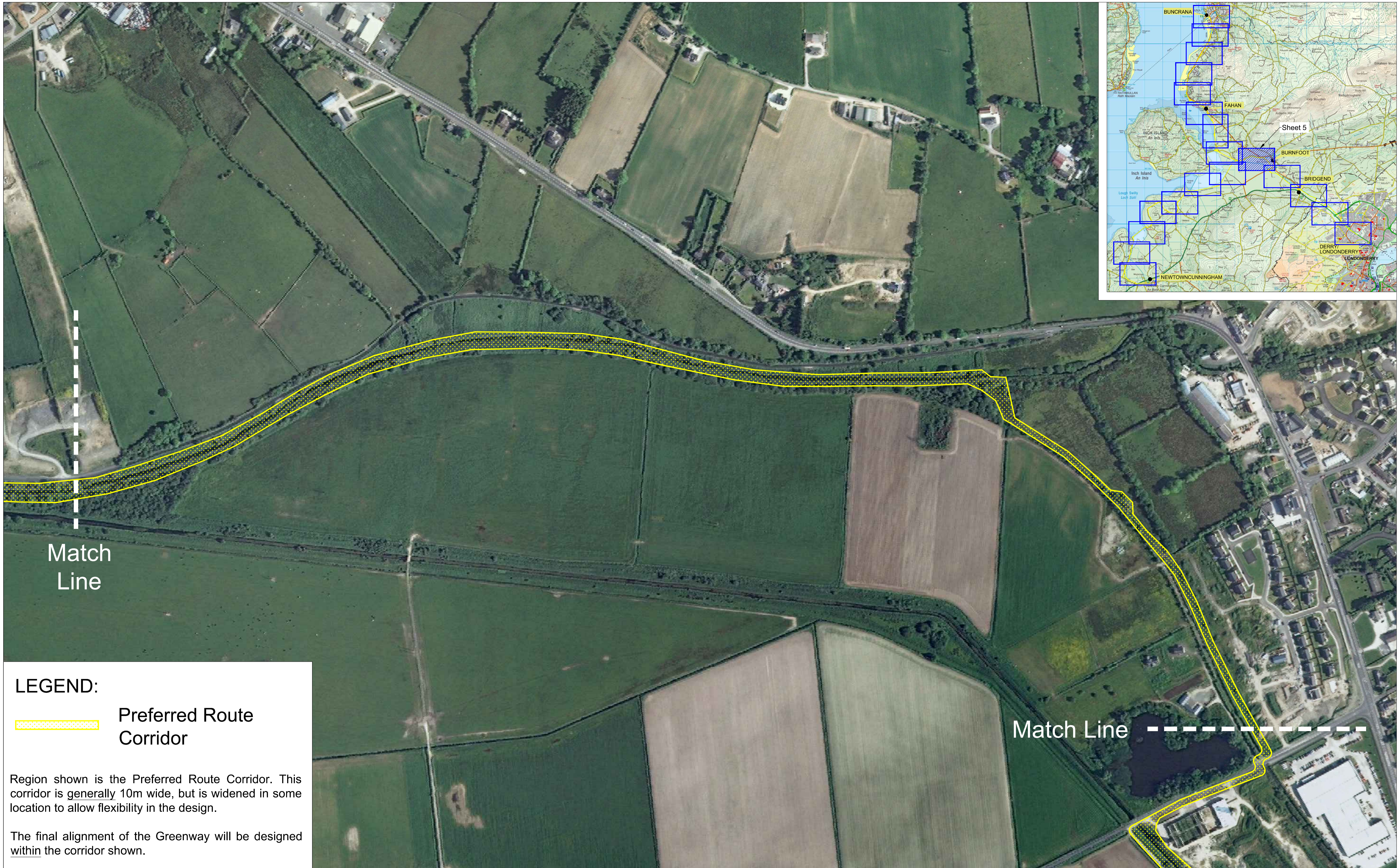
Region shown is the Preferred Route Corridor. This corridor is generally 10m wide, but is widened in some location to allow flexibility in the design.

The final alignment of the Greenway will be designed within the corridor shown.

- - - - - Match Line

NORTH WEST GREENWAY NETWORK
Route 1 - Preferred Route Corridor
Sheet 4 of 20, 1:250 @ A1, 1:500 @ A3
Published 29th July 2019





Match Line

Match Line

LEGEND:

 Preferred Route Corridor

Region shown is the Preferred Route Corridor. This corridor is generally 10m wide, but is widened in some location to allow flexibility in the design.

The final alignment of the Greenway will be designed within the corridor shown.

NORTH WEST GREENWAY NETWORK
 Route 1 - Preferred Route Corridor
 Sheet 5 of 20, 1:250 @ A1, 1:500@A3
 Published 29th July 2019





LEGEND:

 Preferred Route Corridor

Region shown is the Preferred Route Corridor. This corridor is generally 10m wide, but is widened in some location to allow flexibility in the design.

The final alignment of the Greenway will be designed within the corridor shown.

NORTH WEST GREENWAY NETWORK
 Route 1 - Preferred Route Corridor
 Sheet 6 of 20, 1:250 @ A1, 1:500 @ A3
 Published 29th July 2019





Match Line

Match Line

LEGEND:

 Preferred Route Corridor

Region shown is the Preferred Route Corridor. This corridor is generally 10m wide, but is widened in some location to allow flexibility in the design.

The final alignment of the Greenway will be designed within the corridor shown.



LEGEND:

 Preferred Route Corridor

Region shown is the Preferred Route Corridor. This corridor is generally 10m wide, but is widened in some location to allow flexibility in the design.

The final alignment of the Greenway will be designed within the corridor shown.

NORTH WEST GREENWAY NETWORK
 Route 1 - Preferred Route Corridor
 Sheet 8 of 20, 1:250 @ A1, 1:500 @ A3
 Published 29th July 2019



LEGEND:

 Preferred Route Corridor

Region shown is the Preferred Route Corridor. This corridor is generally 10m wide, but is widened in some location to allow flexibility in the design.

The final alignment of the Greenway will be designed within the corridor shown.

NORTH WEST GREENWAY NETWORK
 Route 1 - Preferred Route Corridor
 Sheet 9 of 20, 1:250 @ A1, 1:500 @ A3
 Published 29th July 2019



LEGEND:



Preferred Route Corridor

Region shown is the Preferred Route Corridor. This corridor is generally 10m wide, but is widened in some location to allow flexibility in the design.

The final alignment of the Greenway will be designed within the corridor shown.

NORTH WEST GREENWAY NETWORK
Route 1 - Preferred Route Corridor
 Sheet 10 of 20, 1:250 @ A1, 1:500 @ A3
 Published 29th July 2019



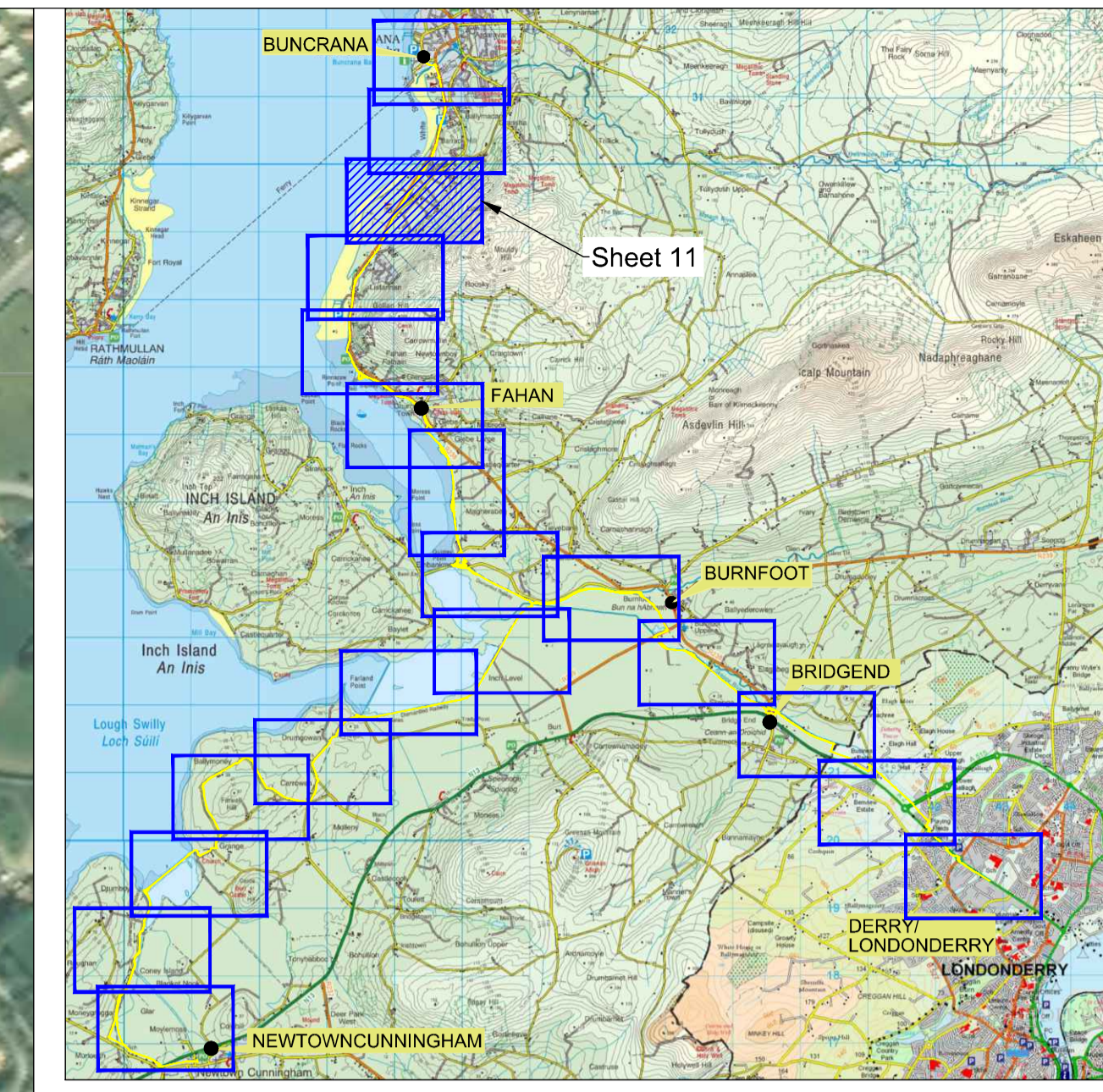
McAdam Design Ltd
 1st Montgomery House
 478 Castlereagh Road
 Belfast, BT5 6BQ
 T 028 9040 2000
 F 028 9079 4144
 admin@mcadamdesign.co.uk
 www.mcadamdesign.co.uk




Northern Ireland - Ireland - Scotland
 European Regional Development Fund
 The North West Greenway Network project has been supported by the European Union's INTERREG VA Programme, managed by the Special EU Programmes Body (SEUPB)



Match Line - - - - -



LEGEND:

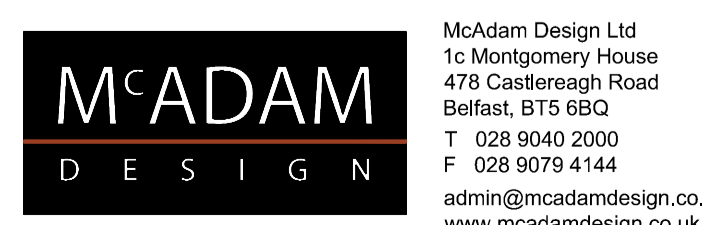
 Preferred Route Corridor

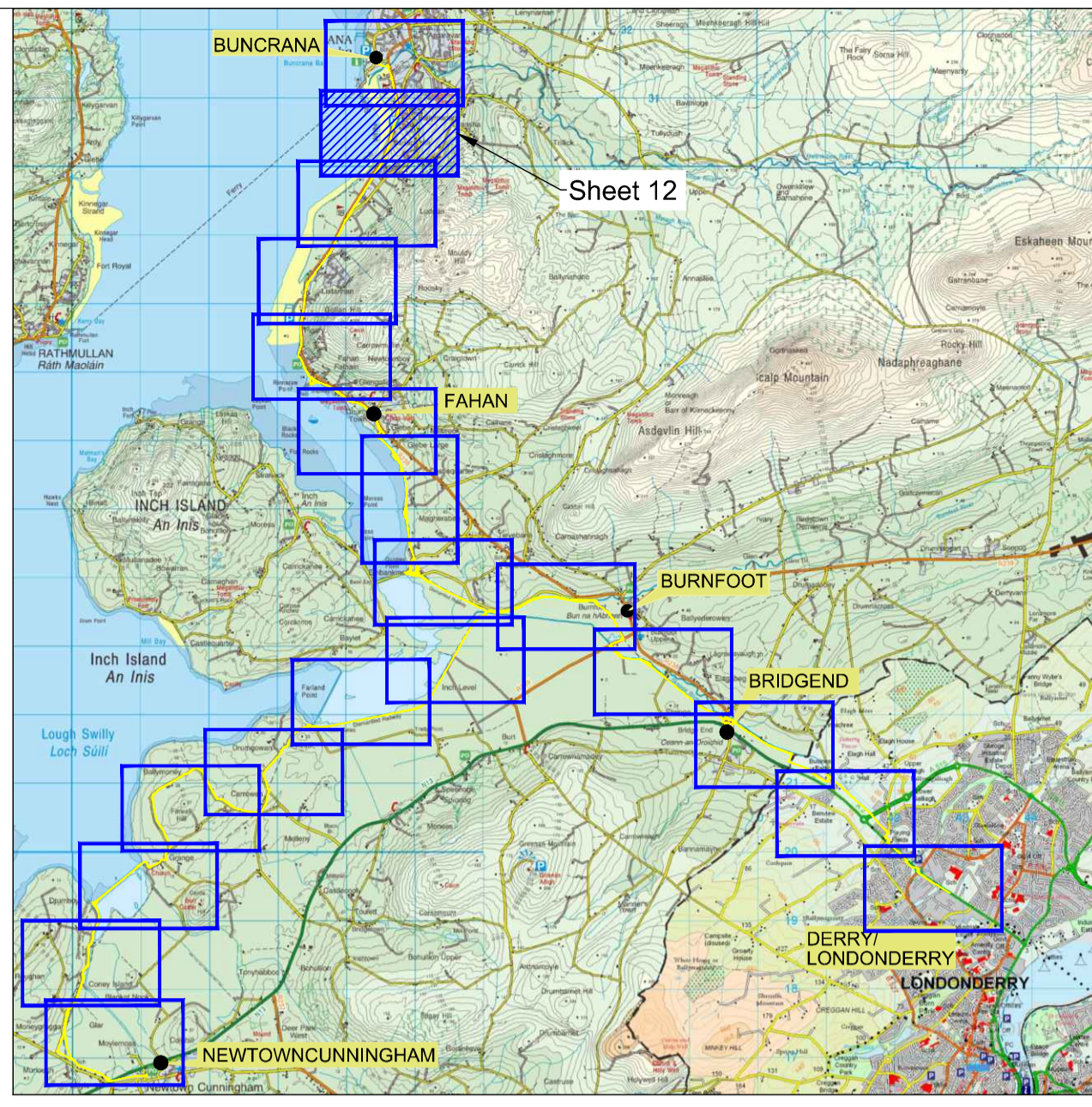
Region shown is the Preferred Route Corridor. This corridor is generally 10m wide, but is widened in some location to allow flexibility in the design.

The final alignment of the Greenway will be designed within the corridor shown.

Match Line - - - - -

NORTH WEST GREENWAY NETWORK
 Route 1 - Preferred Route Corridor
 Sheet 11 of 20, 1:250 @ A1, 1:500 @ A3
 Published 29th July 2019





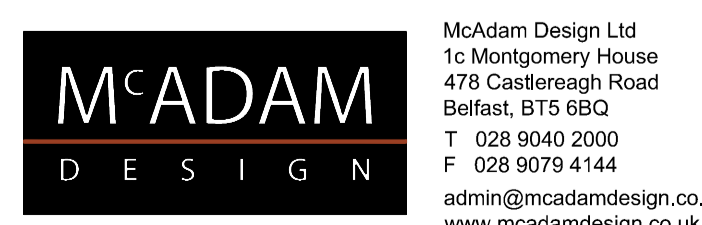
LEGEND:

 Preferred Route Corridor

Region shown is the Preferred Route Corridor. This corridor is generally 10m wide, but is widened in some location to allow flexibility in the design.

The final alignment of the Greenway will be designed within the corridor shown.

NORTH WEST GREENWAY NETWORK
 Route 1 - Preferred Route Corridor
 Sheet 12 of 20, 1:250 @ A1, 1:500 @ A3
 Published 29th July 2019





LEGEND:



Preferred Route Corridor

Region shown is the Preferred Route Corridor. This corridor is generally 10m wide, but is widened in some location to allow flexibility in the design.

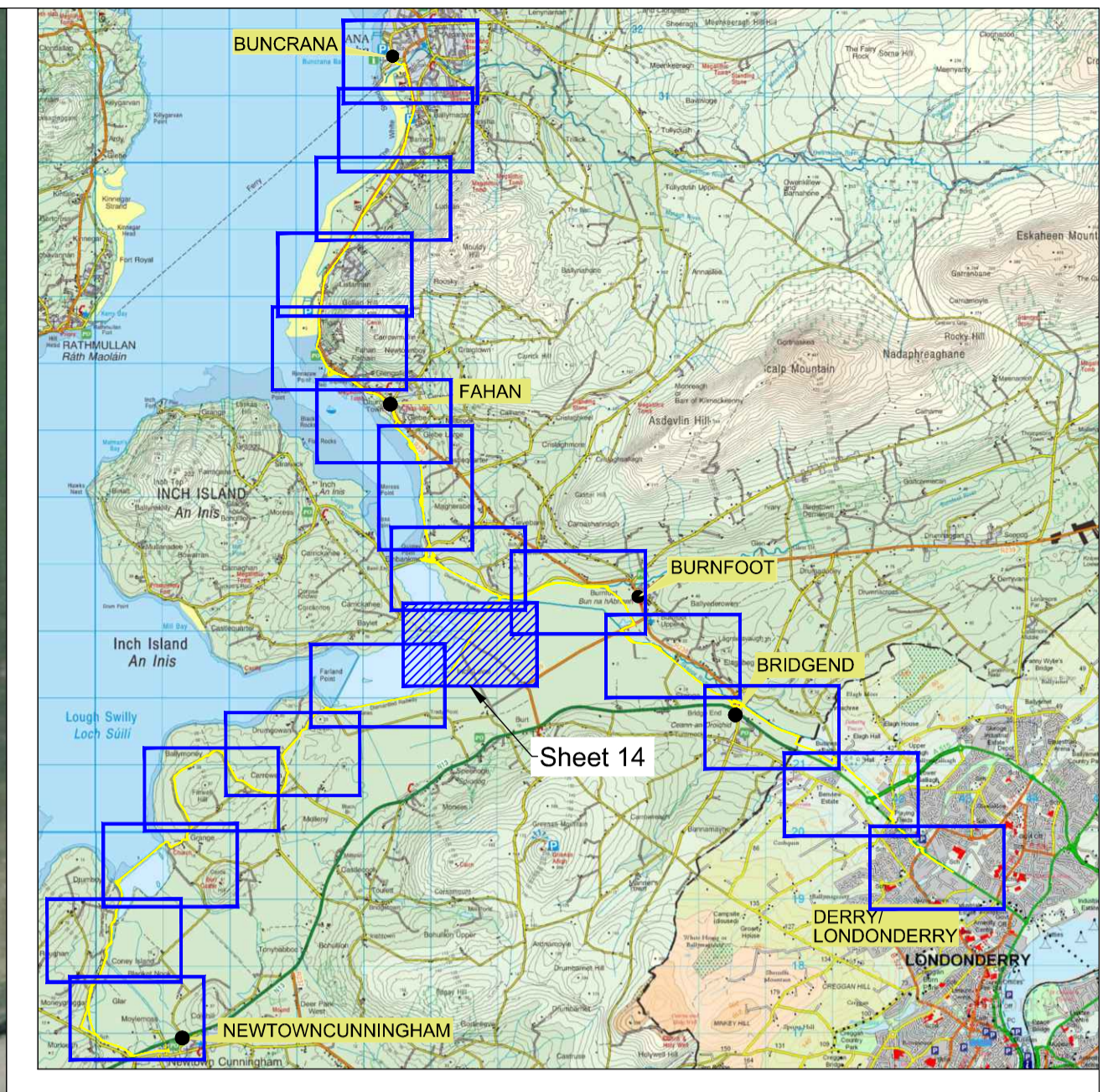
The final alignment of the Greenway will be designed within the corridor shown.


Match Line - - - - -

NORTH WEST GREENWAY NETWORK
 Route 1 - Preferred Route Corridor
 Sheet 13 of 20, 1:250 @ A1, 1:500 @ A3
 Published 29th July 2019



Match Line - - - - -



LEGEND:
 Preferred Route Corridor

Region shown is the Preferred Route Corridor. This corridor is generally 10m wide, but is widened in some location to allow flexibility in the design.

The final alignment of the Greenway will be designed within the corridor shown.

Match Line - - - - -


NORTH WEST GREENWAY NETWORK
 Route 1 - Preferred Route Corridor
 Sheet 14 of 20, 1:250 @ A1, 1:500 @ A3
 Published 29th July 2019



Match Line - - - - -

- - - - -
Match
Line

LEGEND:

 Preferred Route Corridor

Region shown is the Preferred Route Corridor. This corridor is generally 10m wide, but is widened in some location to allow flexibility in the design.

The final alignment of the Greenway will be designed within the corridor shown.

NORTH WEST GREENWAY NETWORK
 Route 1 - Preferred Route Corridor
 Sheet 15 of 20, 1:250 @ A1, 1:500 @ A3
 Published 29th July 2019

McADAM
DESIGN

McAdam Design Ltd
 1st Montgomery House
 478 Castlereagh Road
 Belfast, BT5 6BQ
 T 028 9040 2000
 F 028 9079 4144
 admin@mcadamdesign.co.uk
 www.mcadamdesign.co.uk

Interreg 
 Northern Ireland - Ireland - Scotland
 European Regional Development Fund


The North West Greenway Network project has been supported by the European Union's INTERREG VA Programme, managed by the Special EU Programmes Body (SEUPB)





Match
Line

Match
Line

LEGEND:
 Preferred Route Corridor


Region shown is the Preferred Route Corridor. This corridor is generally 10m wide, but is widened in some location to allow flexibility in the design.

The final alignment of the Greenway will be designed within the corridor shown.

NORTH WEST GREENWAY NETWORK
 Route 1 - Preferred Route Corridor
 Sheet 16 of 20, 1:250 @ A1, 1:500 @ A3
 Published 29th July 2019



LEGEND:

 Preferred Route Corridor


Region shown is the Preferred Route Corridor. This corridor is generally 10m wide, but is widened in some location to allow flexibility in the design.

The final alignment of the Greenway will be designed within the corridor shown.

NORTH WEST GREENWAY NETWORK
 Route 1 - Preferred Route Corridor
 Sheet 17 of 20, 1:250 @ A1, 1:500 @ A3
 Published 29th July 2019



LEGEND:

 Preferred Route Corridor


Region shown is the Preferred Route Corridor. This corridor is generally 10m wide, but is widened in some location to allow flexibility in the design.

The final alignment of the Greenway will be designed within the corridor shown.

NORTH WEST GREENWAY NETWORK
 Route 1 - Preferred Route Corridor
 Sheet 18 of 20, 1:250 @ A1, 1:500 @ A3
 Published 29th July 2019



LEGEND:

 Preferred Route Corridor

Region shown is the Preferred Route Corridor. This corridor is generally 10m wide, but is widened in some location to allow flexibility in the design.

The final alignment of the Greenway will be designed within the corridor shown.

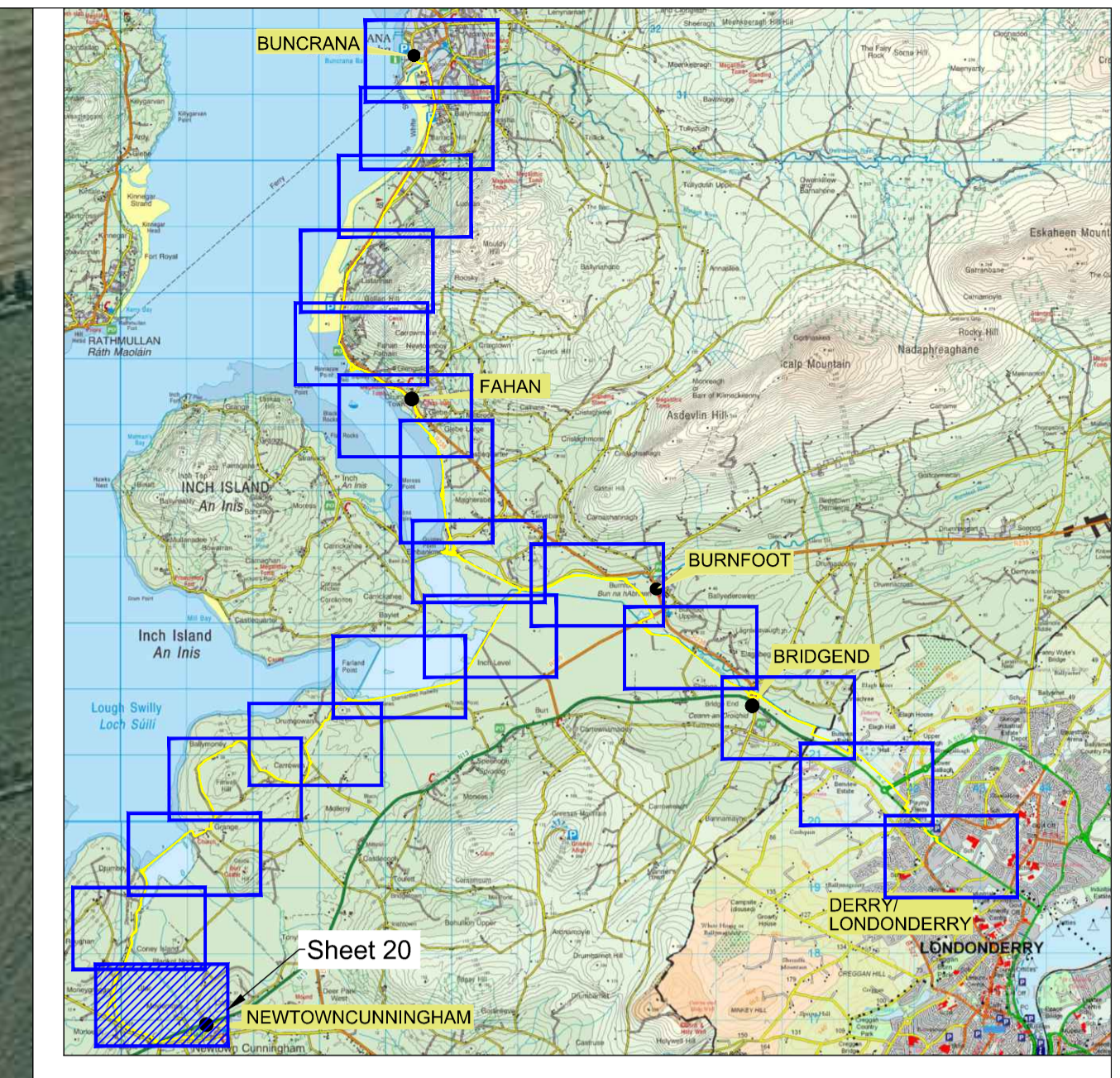
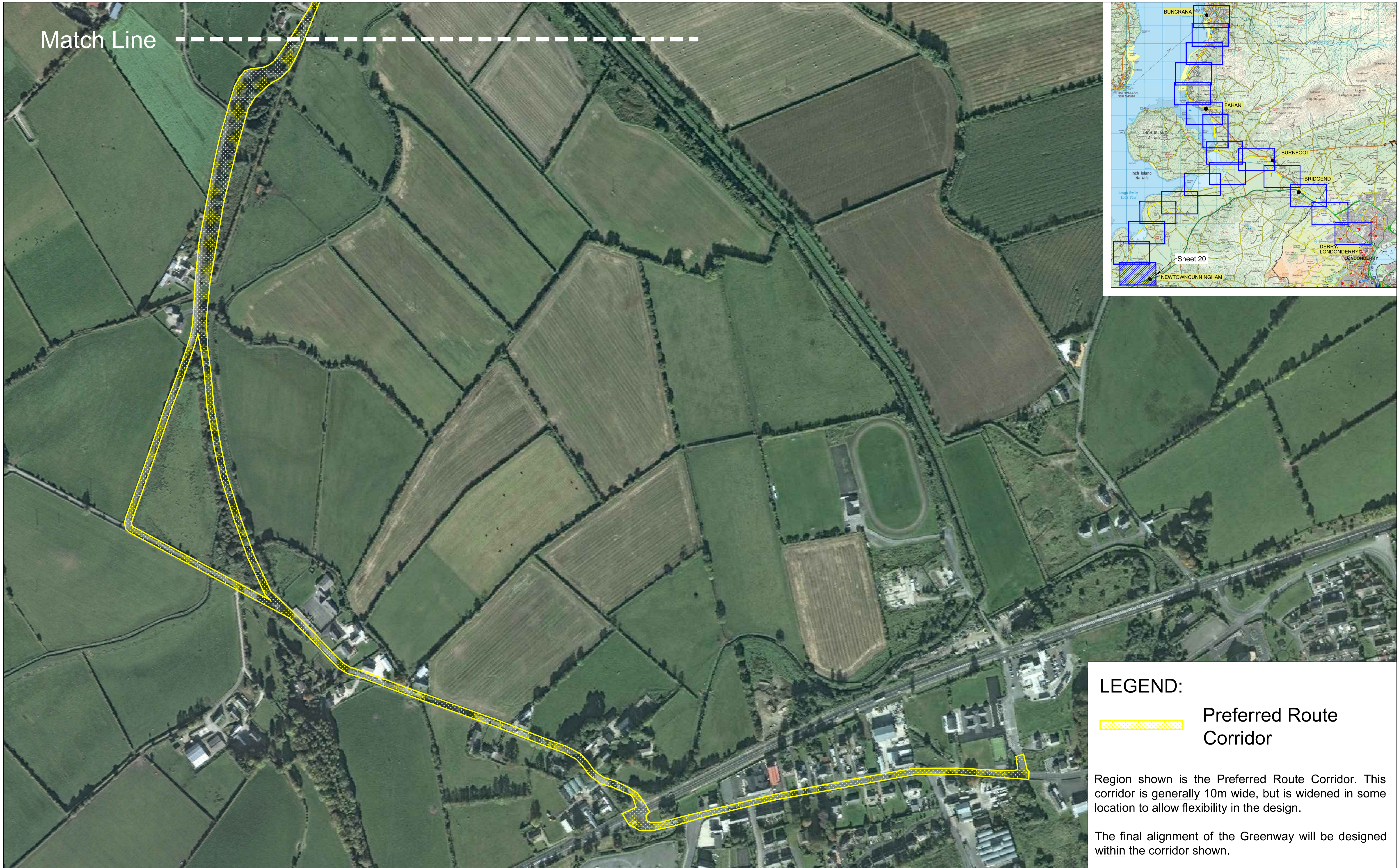
NORTH WEST GREENWAY NETWORK
 Route 1 - Preferred Route Corridor
 Sheet 19 of 20, 1:250 @ A1, 1:500 @ A3
 Published 29th July 2019

McADAM DESIGN
 McAdam Design Ltd
 1st Montgomery House
 478 Castlereagh Road
 Belfast, BT5 6BQ
 T 028 9040 2000
 F 028 9079 4144
 admin@mcadamdesign.co.uk
 www.mcadamdesign.co.uk

Interreg
 Northern Ireland - Ireland - Scotland
 European Regional Development Fund
 The North West Greenway Network project has been supported by the European Union's INTERREG VA Programme, managed by the Special EU Programmes Body (SEUPB)



Match Line



LEGEND:

 Preferred Route Corridor

Region shown is the Preferred Route Corridor. This corridor is generally 10m wide, but is widened in some location to allow flexibility in the design.

The final alignment of the Greenway will be designed within the corridor shown.

NORTH WEST GREENWAY NETWORK
Route 1 - Preferred Route Corridor
Sheet 20 of 20, 1:250 @ A1, 1:500 @ A1
Published 29th July 2019